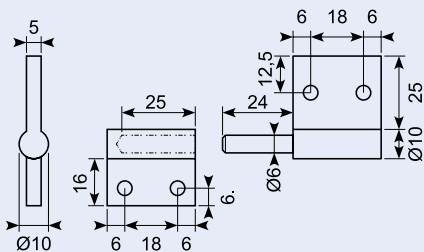


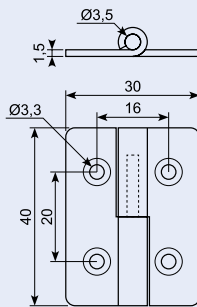
50.12379

Støbt hængsel. Rustfri 304.
Cast hinge. Stainless 304.



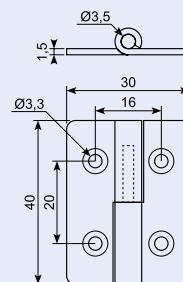
50.34109

Hængsel rustfri poleret. Lift off LH.
Hinge. Stainless. Polished. Lift off LH.



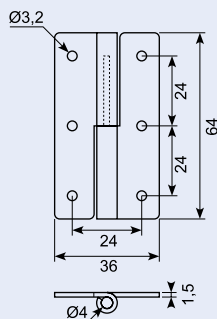
50.34110

Hængsel rustfri poleret. Lift off RH.
Hinge. Stainless. Polished. Lift off RH.



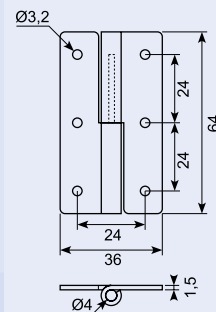
50.34107

Hængsel. Rustfri. Poleret. Lift off RH.
Hinge. Stainless. Polished. Lift off RH.



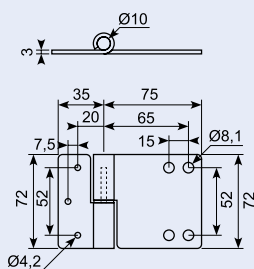
50.34108

Hængsel. Rustfri. Poleret. Lift off LH.
Hinge. Stainless. Polished. Lift off LH.



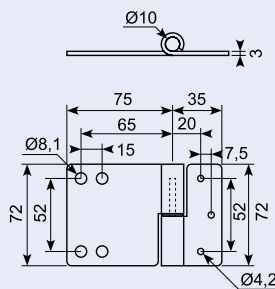
50.34114

Hængsel rustfri poleret. LH Venstre model.
Hinge. Stainless. Polished. LH Left version.



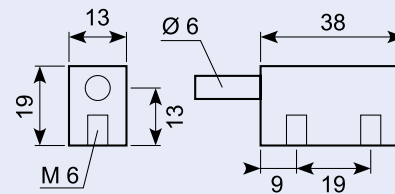
50.34115

Hængsel. Rustfri. Poleret. RH Højre model.
Hinge. Stainless. Polished. LH Right model.



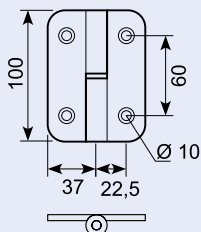
20.089

Rustfri blokhængsel. Oplukkelig, til påboltning fra bagside.
Stainless block hinge. Opening, plant-on fitting.



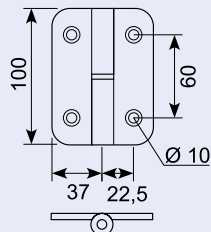
20.200

Knophængsel - venstre. Poleret rustfrit stål.
Lift-off hinge - LH. Polished stainless steel.



20.202

Knophængsel - højre. Poleret rustfrit stål.
Lift-off hinge - RH. Polished stainless steel.



50.DL1120R

Rustfri hængsel.
Stainless hinge.

