



## Size 20/40

Extension force: 500 - 5.000N

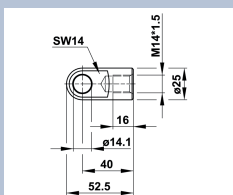
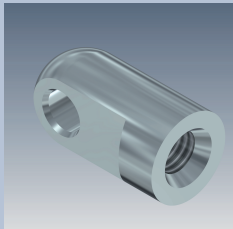
stroke	extended length (EL2)	part number	force [N]
100	317	QS-40-100	500 - 5.000 N  In case of an order, it is essential to mention
150	417	QS-40-150	
200	517	QS-40-200	
300	717	QS-40-300	
400	917	QS-40-400	
500	1117	QS-40-500	
600	1317	QS-40-600	
800	1717	QS-40-800	
1000	2117	QS-40-1000	

### Technical information:

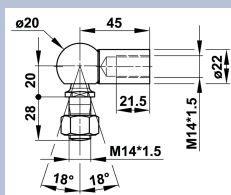
- If we receive the order by 12 am, shipment will be in general on the next working day (up to 25 pieces)
- The extension force must be indicated on the order
- The Bansbach 20/40 Quick Ship gas springs include a valve
- Connecting parts, if chosen, will be enclosed
- Material:  
Piston rod: CeramPro®-coated  
Cylinder: powder-coated black
- Slow speed, strong end damping
- You will find general information and technical details in our main catalogue
- You will find customized gas springs in our main catalogue

## Optional connecting parts

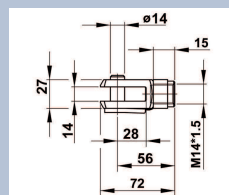
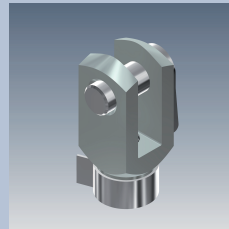
Hinge eye  
S5



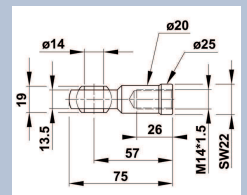
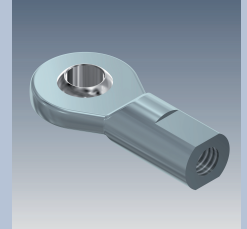
Elbow joint  
B4



Clevis  
L5



Hinge head  
C8



Technische Änderungen und Druckfehler vorbehalten. The flyer is subject to technical alterations and printing mistakes.